

# There's a storm coming... Make your next project RainSafe

PRODUCT BROCHURE 2026



[www.rainsafe.eu](http://www.rainsafe.eu)



[sales@cubicm3.com](mailto:sales@cubicm3.com)

CubicM3, a leader in sustainable stormwater management, with over two decades of international expertise and thousands of systems installed across three continents. RainSafe, is our innovative range of attenuation chambers developed for sustainable and efficient stormwater management. CubicM3 leveraged its extensive experience to develop RainSafe in collaboration with top-tier global specialists in geotechnical engineering, structural analysis, design-for-manufacture, and product testing. Utilising cutting-edge Finite Element modeling, the chambers are optimized for structural capacity, transport efficiency and durability.

Manufactured in Europe by state-of-the art precision injection moulding and using high quality virgin polypropylene, RainSafe ensures uniform wall-thickness and exceptional quality, meeting or surpassing the relevant and stringent design codes and standards such as Eurocode and ISO 4982. Our RainSafe chambers and end-caps have undergone exhaustive independent material and product performance testing to secure CSTB certification for the products and QB certification for the manufacturing process, affirming suitability and reliability.

### RainSafe Chambers key features:

- **Industry-leading structural capacity** for both for live traffic loads (eg heavy vehicles) and long-term dead loads in deep cover applications.
- **CSTB and QB certified ensure full compliance with relevant European** and local codes.
- **Modular design with button-tab features** enables rapid adaptable and flexible assembly on-site, saving time and labour.
- **Reduced Carbon footprint** through structural efficiency design, European based manufacture and optimized containerized transport.
- **Lightweight design (RT-1140 weights <50kg)** with integrated handles allowing safe lifting by two operatives.
- **Separator Row** provides primary treatment, captures suspended solids and provides quick and easy cost-effective access for maintenance ensuring tank performance and enhancing discharge water quality .
- **Built-in vents** provide improved circulation and prevent air-entrapment ensuring full hydraulic function and preserving chamber storage capacity.
- **Rapid lead times** ensure delivery within as little as one week from placement of order.



## RainSafe Chamber Specifications



### RainSafe RT-720 Nominal Specifications:

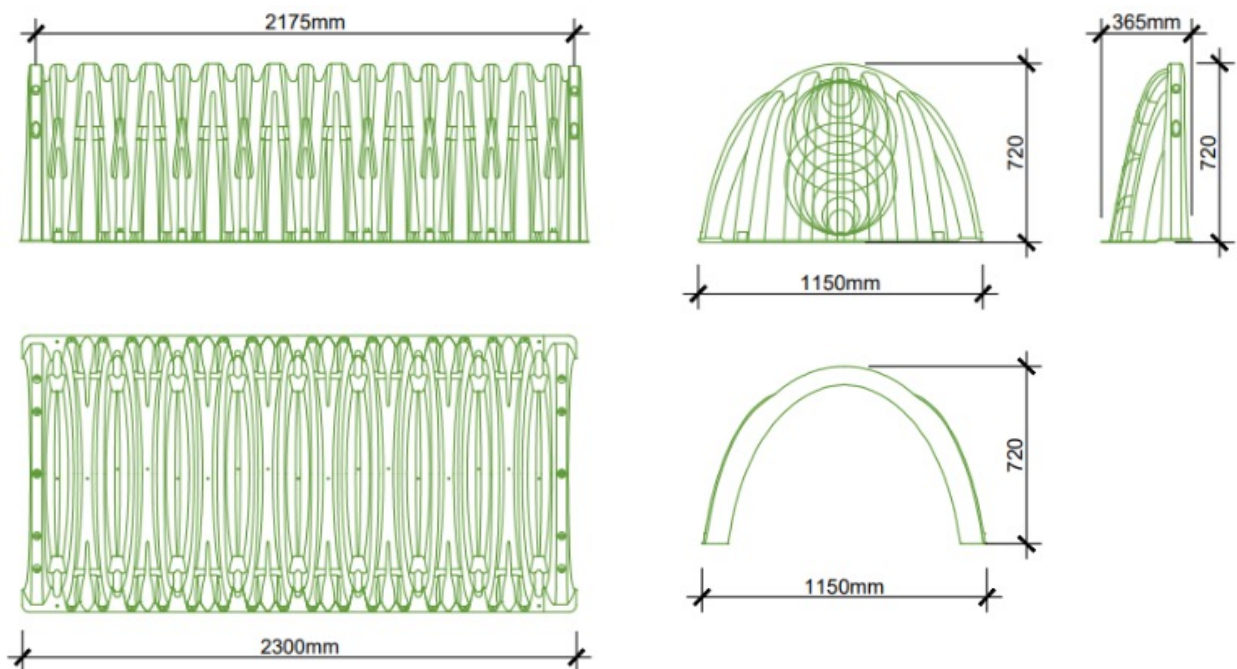
Dimensions (L x W x H)	2175 x 1150 x 720 mm
Chamber Capacity	1.16 m <sup>3</sup>
Weight	26.4 kg
Min. Base Stone*	150 - 300 mm
Min. Stone Above	150 mm
Min. Row Spacing	150 mm
Min. Total Cover**	450 mm
Max. total Cover	4500 mm

\* Base stone depth varies with total cover depth

\*\* Min cover to support HGV loading is 600mm

CubicM3 has decades of hands-on experience of designing, installing and maintaining stormwater systems and over the years have worked with many other brands of arch and crate products.

In developing our own system, RainSafe was designed to capture that practical experience and provide improvements for every stage – from manufacturing, to stacking, transport and handling, to enhanced structural and hydraulic performance. We support our products with class-leading design and structural analysis tools.



## RainSafe Chamber Specifications



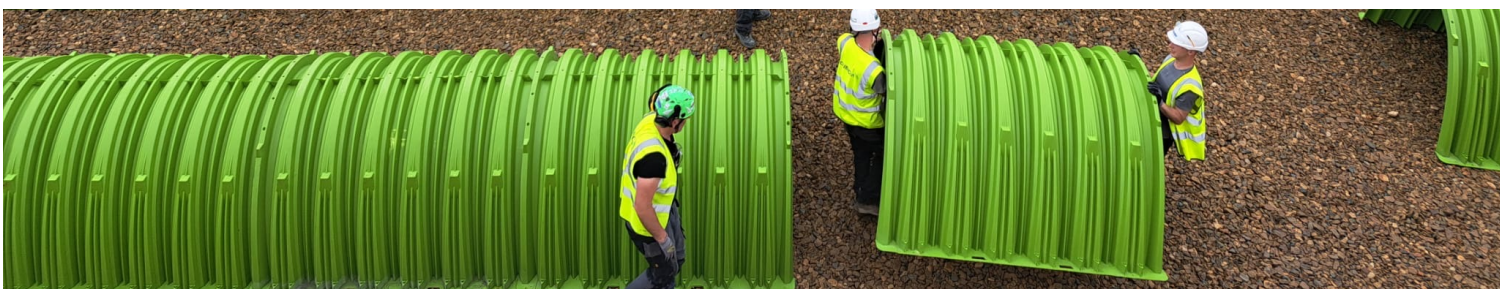
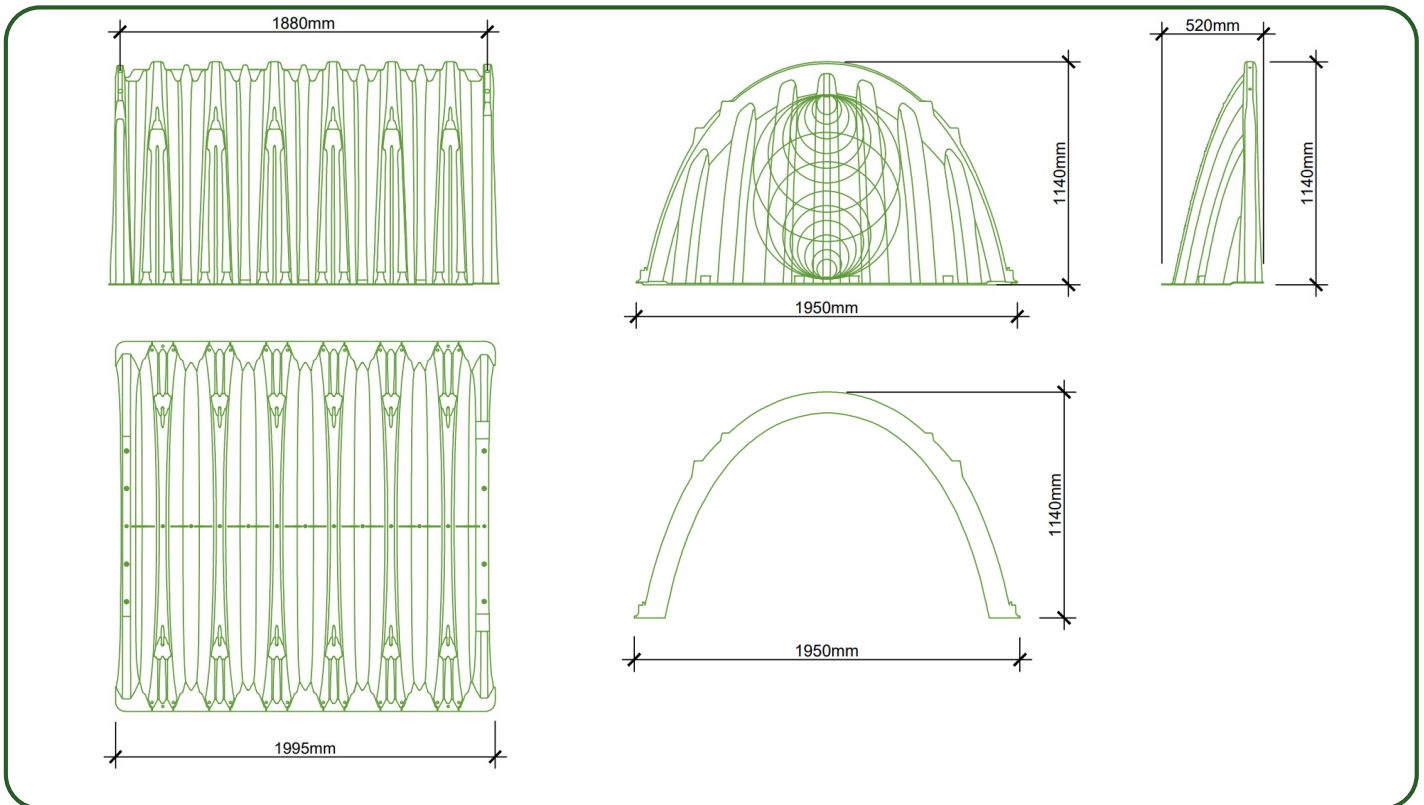
Meeting the most stringent industry standards, RainSafe RT-720 and RT-1140 chambers combine market-leading structural performance with cost-efficiency and ease of use. Capability of supporting HGV traffic and deep cover loading requirements, along with the flexibility to adapt to virtually any site layout make RainSafe chambers the ideal solution for managing stormwater in virtually all scenarios faced by developers, engineers and contractors.

### RainSafe RT-1140 Nominal Specifications:

Dimensions (L x W x H)	1880 x 1950 x 1140 mm
Chamber Capacity	2.67 m <sup>3</sup>
Weight	48.5 kg
Min. Base Stone*	150 - 300 mm
Min. Stone Above	150 mm
Min. Row Spacing	300 mm
Min. Total Cover**	450 mm
Max. total Cover	4000 mm

\* Base stone depth varies with total cover depth

\*\* Min cover to support HGV loading is 600mm



## Built to Take Pressure

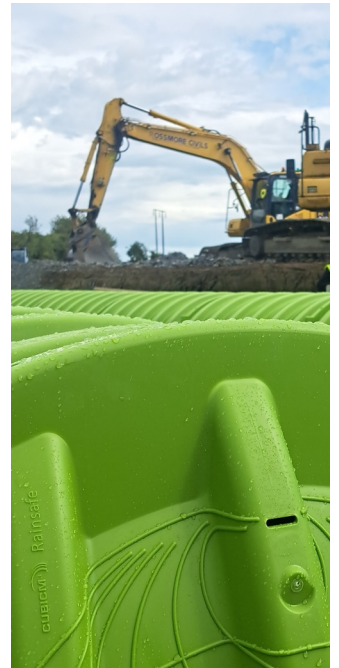


### **Structural rigidity and maximum allowable construction loads**

RainSafe storm attenuation systems from CubicM3 are engineered for strength and durability, offering exceptional load-bearing performance in even the most demanding environments. Designed to withstand the weight of heavy machinery and traffic, RainSafe is ideal for installation beneath car parks, roadways, and commercial yards.

Whether exposed to occasional HGV movements or constant industrial operations, the system's **robust modular structure** ensures long-term stability without compromise. Independent load testing confirms that RainSafe meets and exceeds relevant structural standards, giving you **peace of mind and flexibility** in project planning.

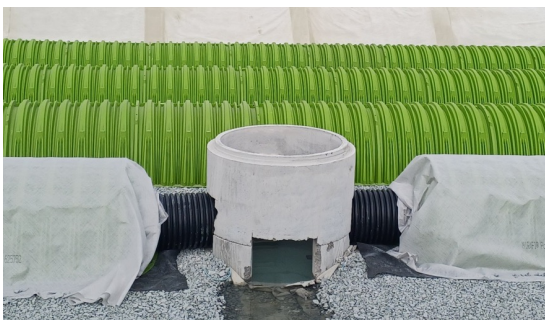
With RainSafe, there's no need to limit your surface usage—**functionality above ground doesn't come at the expense of performance below.**



## Safe, Efficient Inspection and Maintenance



RainSafe's Separator Row system is designed with **quick, safe and low-cost visual inspections and access for maintenance** in mind—allowing users to assess sediment build-up easily without the need for invasive procedures. When maintenance is needed, the **straightforward jetting and vacuum process** makes cleaning simple, effective, and fast. Using a self-propelling jetting unit, silt and debris are efficiently flushed and removed, ensuring optimal system performance.



Photographic records and maintenance logs help track system condition over time, making it easier to optimise inspection schedules and reduce unnecessary servicing. With clear guidance and minimal disruption, RainSafe helps keep your stormwater system operating smoothly and compliantly.

## Developed to meet the needs of both Installers and End-users

CubicM3 has decades of experience designing, installing and maintaining stormwater systems across all types of applications from residential, to industrial and commercial and critical infrastructure. In that time, we have worked with many other products and in developing RainSafe we recognised the needs of all the stakeholders to these types of projects, including the drive for sustainability.

That meant that as well as designing for industry-leading structural and hydraulic performance, we placed particular focus on how to improve RainSafe's sustainability over other underground storage systems.

The results speak for themselves:

### Structural efficiency reduces material usage:

RainSafe's unique corrugation patterns allow it to meet the most stringent loading requirements while actually using less plastic per m<sup>3</sup> of chamber storage:

- ✓ Up to 25% less than other leading arches
- ✓ Up to 75% less than typical crate products

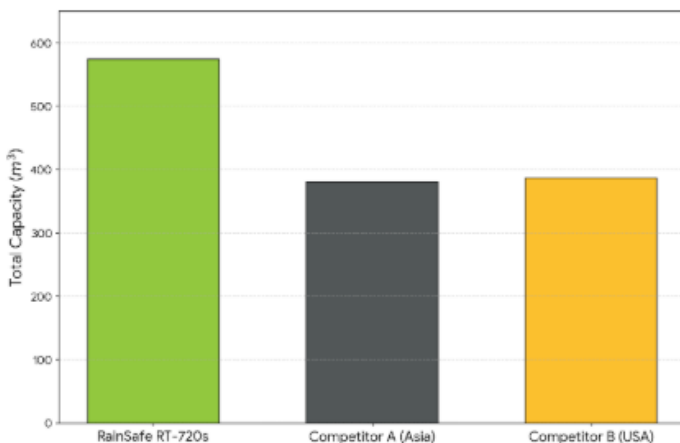
### Packing and Transport efficiency reduces fuel consumption:

RainSafe is designed to provide exceptional packing efficiency for container-based transport. This reduces fuel costs and carbon footprint in getting our products from the factory to your site.

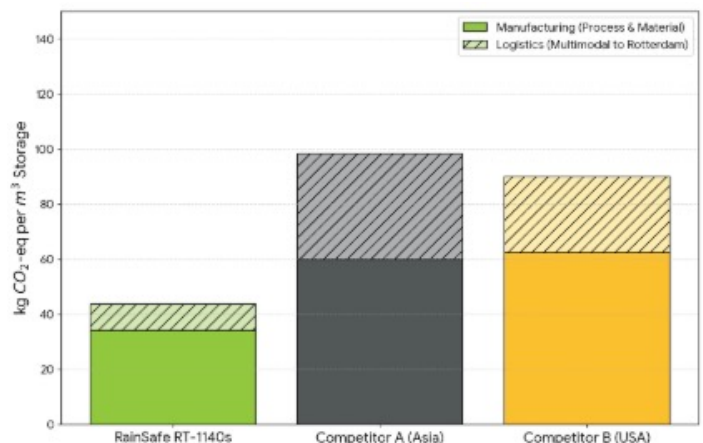
### Manufacturing Energy usage:

RainSafe is manufactured in the EU on state-of-the-art injection moulding machines running on low-emission low-carbon energy sources, with enormous savings in carbon intensity compared to products made on grids powered by fossil fuels.

Comparison of Total Chamber Storage per Standard Load \*



Comparison of Total CO<sub>2</sub> intensity per delivered m<sup>3</sup> \*



\* Estimates and analysis based on publicly available information

# The Future is Green



**CubicM3 provides full Engineering and Design Support**



**Contact us today to discuss your next project**

